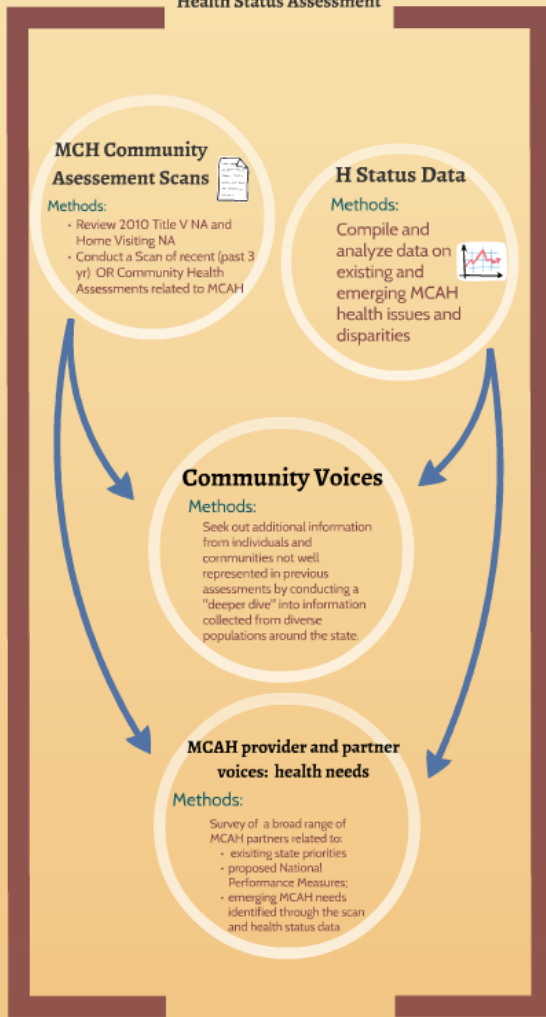


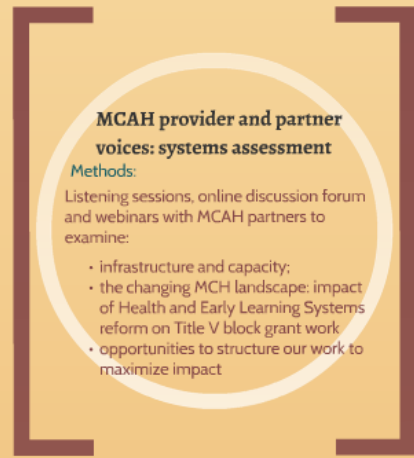
**Community Themes and Strengths Assessment
and
Health Status Assessment**



Oregon's Title V Needs Assessment Process (Rev 10/14)



MCH Health System and Forces of Change Assessment



Prioritization and Planning

Synthesize community and partner identified Maternal and Child Health and systems issues; examine in context of MCH block grant work and root causes

MCH Block Grant 3.0 priority selection

Engage Title V implementing and alignment partners in determining Oregon's priorities for national and state BG 3.0 performance measures

- Focus on how to align our work and resources for maximum impact
- build partner commitment and engagement

Integrate selected priorities and performance measures into 2016 Title V Block Grant

Develop action plan including process, structural measures, and strategies

- Engage community members to develop and implement population-specific strategies

Maternal and Child Health needs

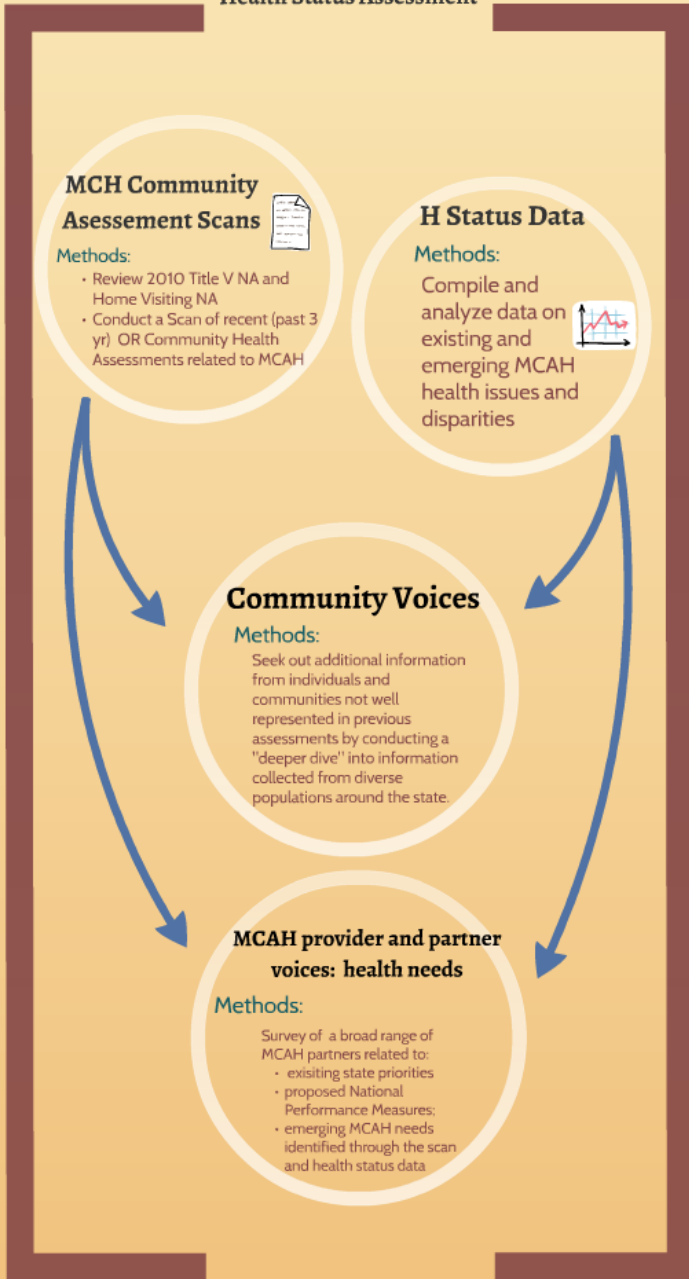


MCAH system needs

Methods:

**Community Themes and Strengths Assessment
and
Health Status Assessment**

Oregon's Title V Needs Assessment Process (Rev 10/14)



Prioritization and Planning

Synthesize community and partner identified Maternal and Child Health and systems issues; examine in context of MCH block grant work and root causes

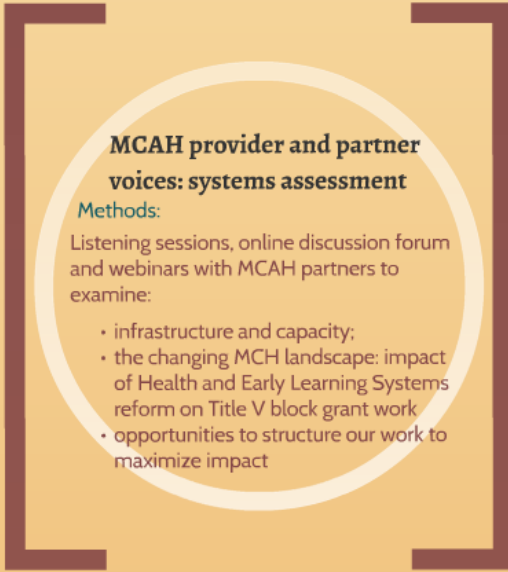


Integrate selected priorities and performance measures into 2016 Title V Block Grant

Develop action plan including process, structural measures, and strategies

- Engage community members to develop and implement population-specific strategies

MCH Health System and Forces of Change Assessment



 **Maternal and Child Health needs**



MCAH system needs

MCAH provider and partner voices: systems assessment

Methods:
Listening sessions, online discussion forum and webinars with MCAH partners to examine:

- infrastructure and capacity;
- the changing MCH landscape: impact of Health and Early Learning Systems reform on Title V block grant work
- opportunities to structure our work to maximize impact